

## Warrior Battery Pack -Model WBV-4GC Portable Wireless IP Video Camera Installation



The WBV-4GC battery pack contains a rechargeable battery, and related wiring. It also provides a bracket to hold the battery and a Linksys WVC54GC wireless video camera. The wiring includes an external connector for the charger a power on/off switch for the camera, and internal connections to the battery and camera. For a complete portable wireless IP video camera, the user must provide and install a WVC54G4C video camera.

After the camera is installed and configured, the video may be viewed via a standard browser on a PC or PDA using by using the Linksys Viewer client software provided with the camera..

**Camera Installation** - Open the WBV-4GC case by removing the 4 screws at the corners of the back cover. Carefully remove the back cover to avoid disturbing the internal wiring..



The wiring between the side of the case and the battery is pre-connected and does not need to be changed. Should this wiring become disconnected, be certain that you do not connect the 12V connector to the camera. There is one unused 5V power connector for the camera.

Attach the camera to the bracket using the 2 1/4-20 screws and attach the 5V power connector to the camera. Re-install the rear cover and the camera is ready for use.

### Camera and Router Configuration

See the WBV-4GC Quick Start document for additional details. The standard configuration for the camera is-

SSID – warrior1

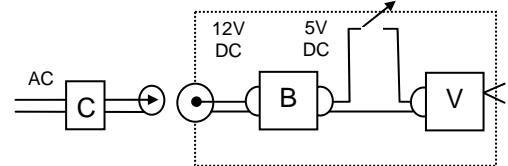
IP address, Fixed, 192.168.1.52

Gateway & DNS – 192.168.1.1

Router – Forward port 1152 to 192.168.1.52

**Charging the battery** – Connect the charger to any 110/220 VAC power source. Verify that the ‘Charge’ LED is green. Connect the charger output to charge input (12V) If the ‘Charge’ led is red the battery is low and the battery is charging.

It is normal for the charger to be warm during charging.



The battery should

C-Charger, B-Battery, V-Video Camera

always be cool. The charge is complete when the Charge LED turns green. The battery does not have a ‘memory’ and may be charged at any time without loss of capacity. Charge the battery twice the first time it is used. For a full charge, keep charging until the LED on the charger turns green.

**Battery test** – The battery status indicators are internal to the case and are only needed for trouble shooting. Open the case, disconnect the battery from charger and the load. Press test button. Read the charge status from the 4 LEDs – 100%, 75%, 50% or 25%.

**Battery maintenance** – The battery will discharge after several months of storage and should be recharged every 2-3 months.

**CAUTION** – Do not use any other charger. Do not expose the battery to moisture or rain. Do not short circuit the battery. Do not incinerate or expose to heat >170 deg. F. Do not open the battery covers.

**Disposal** – Lithium batteries are covered by a number of recycling and disposal regulations. Be certain that the battery cables are disconnected before packaging for disposal. Take the battery to the closest Rechargeable Battery Recycling Center (RBRC). See [www.rbrc.org](http://www.rbrc.org) **Compliance** – The internal battery is CE certified and complies with FCC part 15 as a class B device. The Li-Ion cells are UL1642 approved.